

A decorative arrangement of driftwood and a curved wooden piece on a textured wall. The wall has a light beige, pebbled texture. The driftwood is light brown and gnarled, with one piece curving across the top. A smooth, curved wooden piece is positioned in the foreground. A white square with a thin black border is centered over the driftwood, containing the word 'TAKUMI' in a dark, sans-serif font.

TAKUMI

WALLHUB | TEXTURED COATING



# TAKUMI COATING

Takumi coating transcends the realm of traditional decorative plaster, offering a sophisticated fusion of high-quality modern resin and artistic versatility. The formula invites exploration of an array of textures and finishes, from the subtly elegant to the boldly contemporary, and beyond.

Crafted with an eye for natural beauty, Takumi coatings blend earthy, muted pigments and organic textures, fully embracing the wabi-sabi ethos of finding perfection in imperfection. Visually stunning, they are designed for durability and high performance, ensuring lasting beauty.

## PACKING CONTENTS :

### Primer Coat:

- 1L Primer Coat
- Covers 7-9 m<sup>2</sup> of wall surface

### Texture Coat:

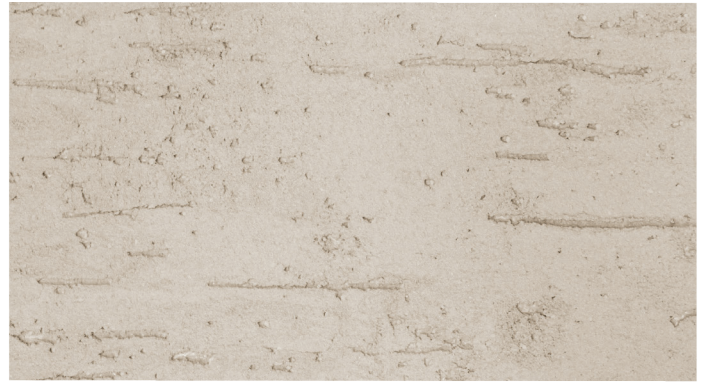
- 10kg Texture Coat
- Coverage varies by design

# TEXTURE SELECTION



ARCHI, TA - ##

\* 4.0 - 5.0 m<sup>2</sup>



BASALT, TB - ##

\* 2.9 - 3.3 m<sup>2</sup>



CANYON, TC - ##

\* 2.9 - 3.3 m<sup>2</sup>



ORO, TO - ##

\* 4.0 - 5.0 m<sup>2</sup>



VOYAGE, TV - ##

\* 2.9 - 3.3 m<sup>2</sup>



POPCORN, TP - ##

\* 2.9 - 3.3 m<sup>2</sup>



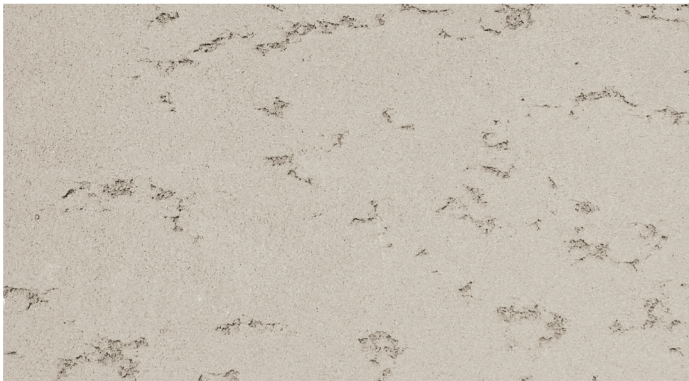
WABI, TW - ##

\* 2.9 - 3.3 m<sup>2</sup>



URBAN, TU - ##

\* 2.9 - 3.3 m<sup>2</sup>



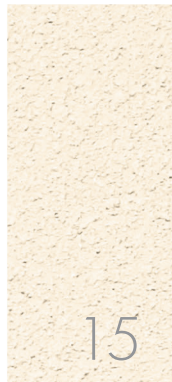
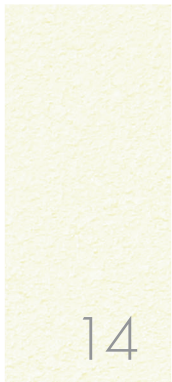
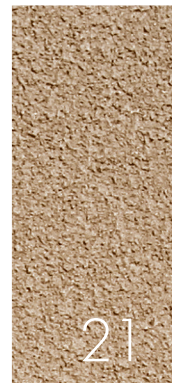
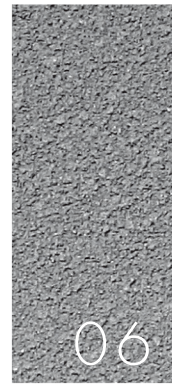
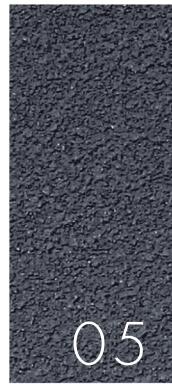
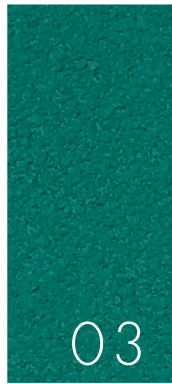
ZEN, TZ - ##

\* 4.0 - 5.0 m<sup>2</sup>



\* Wall Coverage based on 10kg Texture Coat. Texture intensity is indicative; please discuss preferences or requirements before confirmation.

# COLOURS





wallhub

www.wallhub.com.sg

@wallhubsg | @wallhubmy | wallhub.official



Flagship | **Singapore**

Midview City, #01-08/09/31/32  
18 Sin Ming Lane, S573960

Flagship | **Malaysia**

7, Jln Dato Abu Bakar 16/1,  
Section 16, 46350, Petaling Jaya,  
Selangor, Malaysia.

Boutique | **Singapore**

Vertex, #01-24  
33 Ubi Ave 3, S408868

Headquarters Office  
& Warehouse | **Singapore**

Nordcom II, #01-10/32/33  
2 Gambas Cres, S757044